



Leg Lamp Broke

Location of Incident
Date of Incident
Date of Final Report

Hohman, Indiana
~December 1940
December 19, 2024

Cause Mapping®

1. Problem
2. Analysis
3. Solutions

SUMMARY FILE - Contents

	Page
Problem Definition	2
Timeline (Sequence of Events)	3
Cause-and-Effect Analysis (5-, 9-, 18-, Full CM)	4-8
Solutions	9
Matrix	10

1. Problem Outline

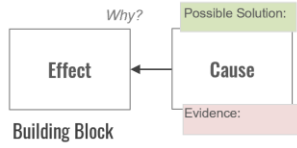
		Leg Lamp Broke	
	Summary Description (Optional)		
What	Problem(s)	Lamp broke, lamp insecurely mounted, periodic activity near lamp location, lamp made of fragile materials, lamp was "ugly", Mom and Dad were mad at each other (Ralphie and Randy's perspective)	
When	Date	~December 1940	
	Time	?	
Where	Different, unique, changed	Watering plant near lamp when it broke	
	Facility, site	Hohman, Indiana	
		3159 W 11th St, Cleveland, OH 44109	
	Unit, area	Parker Home	
	Equipment	Leg Lamp - A Major Award	
	Task(s) being performed	Watering plant, lighting living room	
GOALS	<i>Negative effect to each item below:</i>		
	Safety	Risk of cut to hands while handling pieces of broken lamp material	
	Environmental	None	
	Customer	None	
	Production, Schedule	None	
	Equipment, Property	Complete loss of Leg Lamp - A Major Award	
	Labor, Time	Time spent to attempt to repair lamp, then later bury it outside next to the garage	
		This incident	\$0
Frequency	1x	Annualized cost	\$0

Timeline

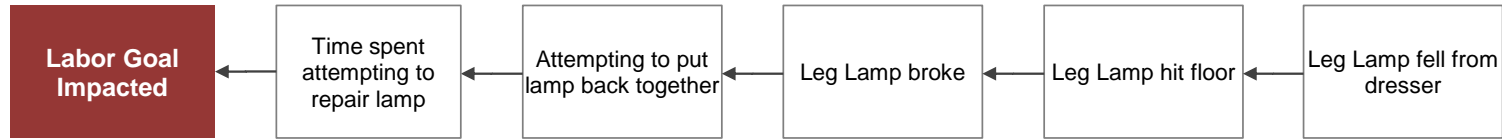
Date	Time	Description	Source, Reference, Note
The Day The Leg Lamp Arrived		<p>Receives Western Union telegram that he won a major prize in a newspaper contest and that it would arrive tonight</p> <p>Box delivered that evening</p> <p>[the Old Man reads a side of the box with the prize that he won] The Old Man : Aaah! "Fra-GEE-leh!" It must be Italian! Mother : Uh, I think that says FRAGILE, honey. The Old Man : Huh? Oh, yeah. [nods in agreement]</p> <p>The Old Man : Holy smokes. Do... Do you know what this is? This is... A lamp! Ralphie as an Adult : [narrating] It was indeed a lamp. The Old Man : Isn't that great? What a great lamp. Mother : I don't know... Ralphie as an Adult : [narrating] The old man's eyes boggled... The Old Man : Oh WOW! Ralphie as an Adult : [narrating] ... Overcome by art.</p> <p>Places it in front room window, Mother is unsure</p> <p>Ralphie as an Adult : [narrating] The snap of a few sparks, a quick whiff of ozone, and the lamp blazed forth in unparalleled glory. The Old Man : Oh, look at that! Will you look at that? Isn't that glorious? It's... it's... it's indescribably beautiful! It reminds me of the Fourth of July!</p> <p>The Old Man : It's a Major Award! Swede : A Major Award? Shucks, I wouldn't know that. It looks like a lamp. The Old Man : It is a lamp, you nincompoop, but it's a Major Award. I won it! Swede : Damn, hell, you say won it? The Old Man : Yeah, mind power, Swede; mind power.</p>	
Several days later		<p>Furnace malfunctions, Mr. Parker goes down to fix it</p> <p>Mrs. Parker walks to living room with watering can</p> <p>Loud crash</p> <p>Mr. Parker rushes upstairs and finds Mrs. Parker holding broken lamp</p> <p>Mrs. Parker admits it was an accident - she was watering her plant, didn't know what happened</p> <p>The Old Man : [after Mother "accidentally" breaks the Old Man's leg lamp] Don't you touch that! You were always jealous of this lamp. Mother : Jealous of a plastic... The Old Man : Jealous! Jealous because I WON. Mother : That's ridiculous. Jealous. Jealous of WHAT? That is... the ugliest lamp I have ever seen in my entire LIFE! Ralphie as an Adult : [narrating] Now it was out.</p> <p>The Old Man : [the Old Man's beloved leg lamp is broken] Get the glue. Mother : We're out of glue. The Old Man : You used up all the glue on purpose!</p> <p>Tried to fix lamp while Mrs. Parker watched quietly in background, chuckling at lack of success</p> <p>Buries fragments of broken lamp in backyard</p>	

Leg Lamp Broke

Cause Mapping*



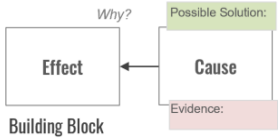
Cause Map™ Diagram



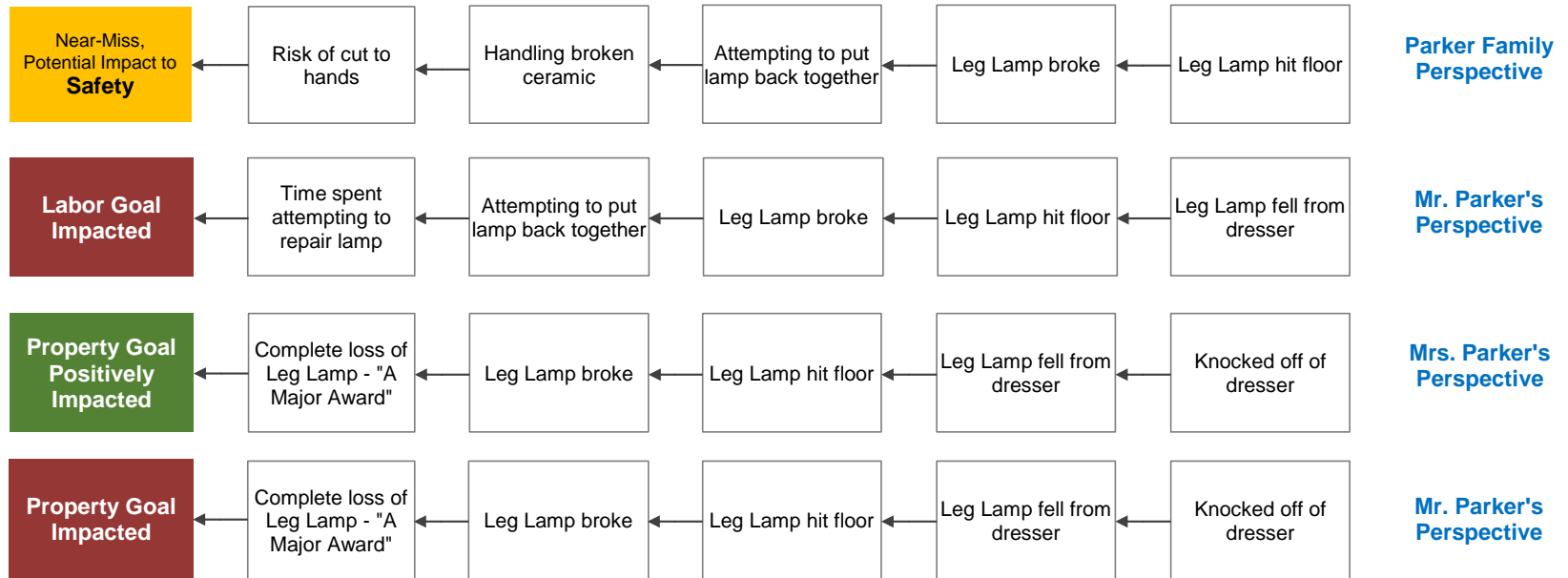
Mr. Parker's Perspective

Leg Lamp Broke

Cause Mapping®

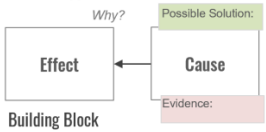


Cause Map™ Diagram

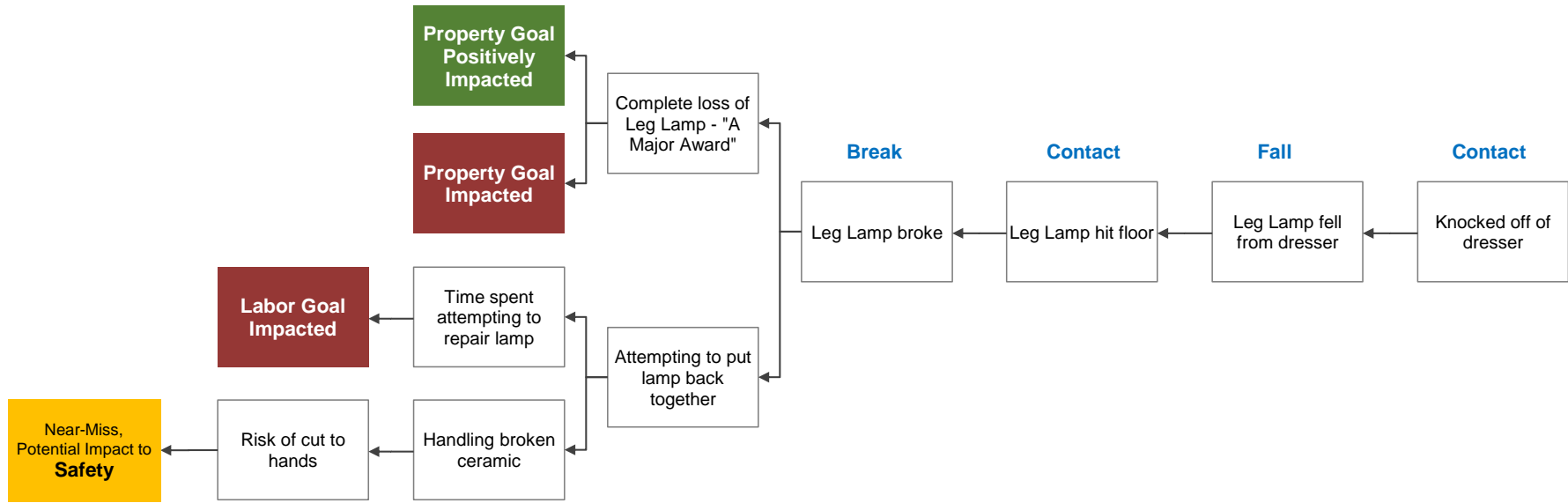


Leg Lamp Broke

Cause Mapping®



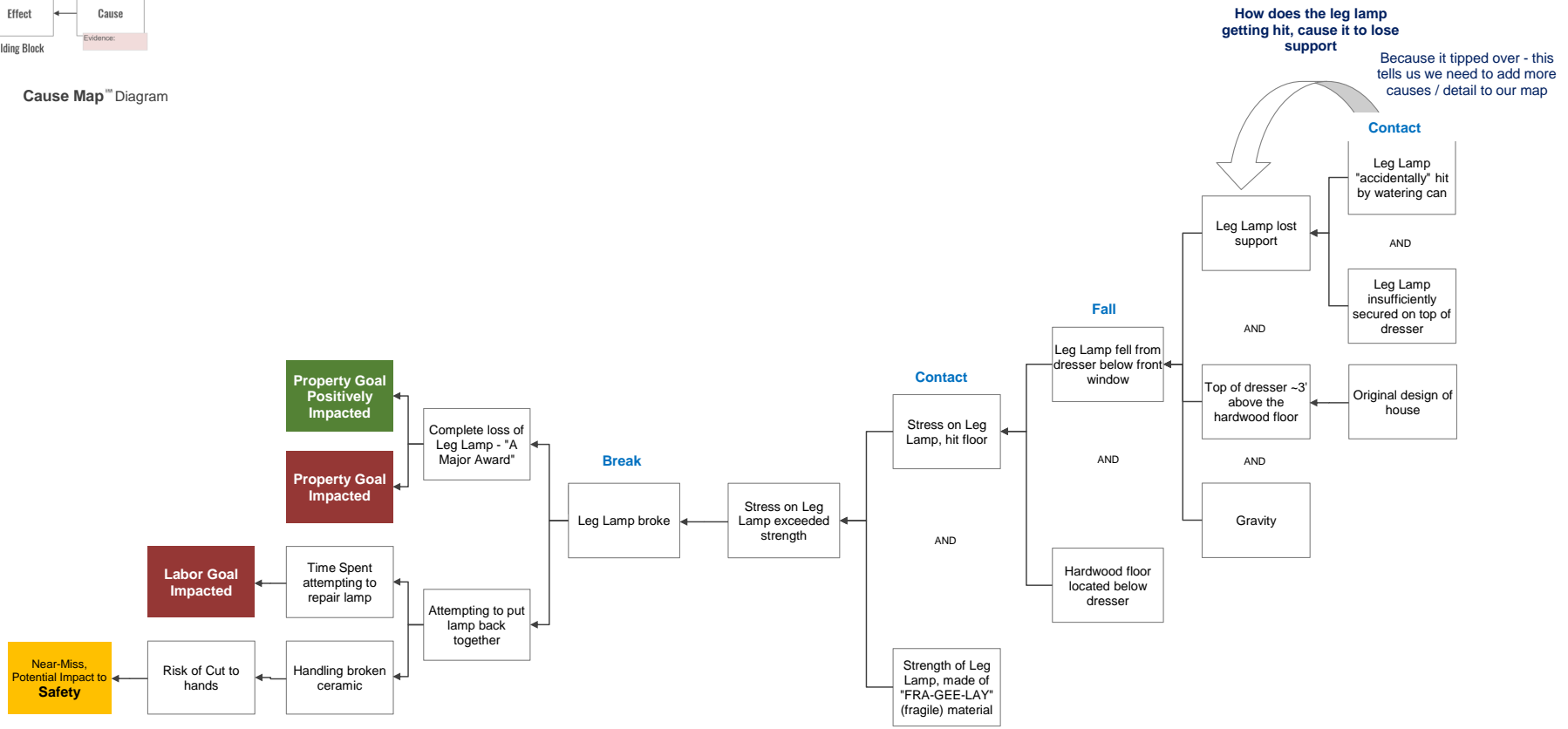
Cause Map™ Diagram



Leg Lamp Broke



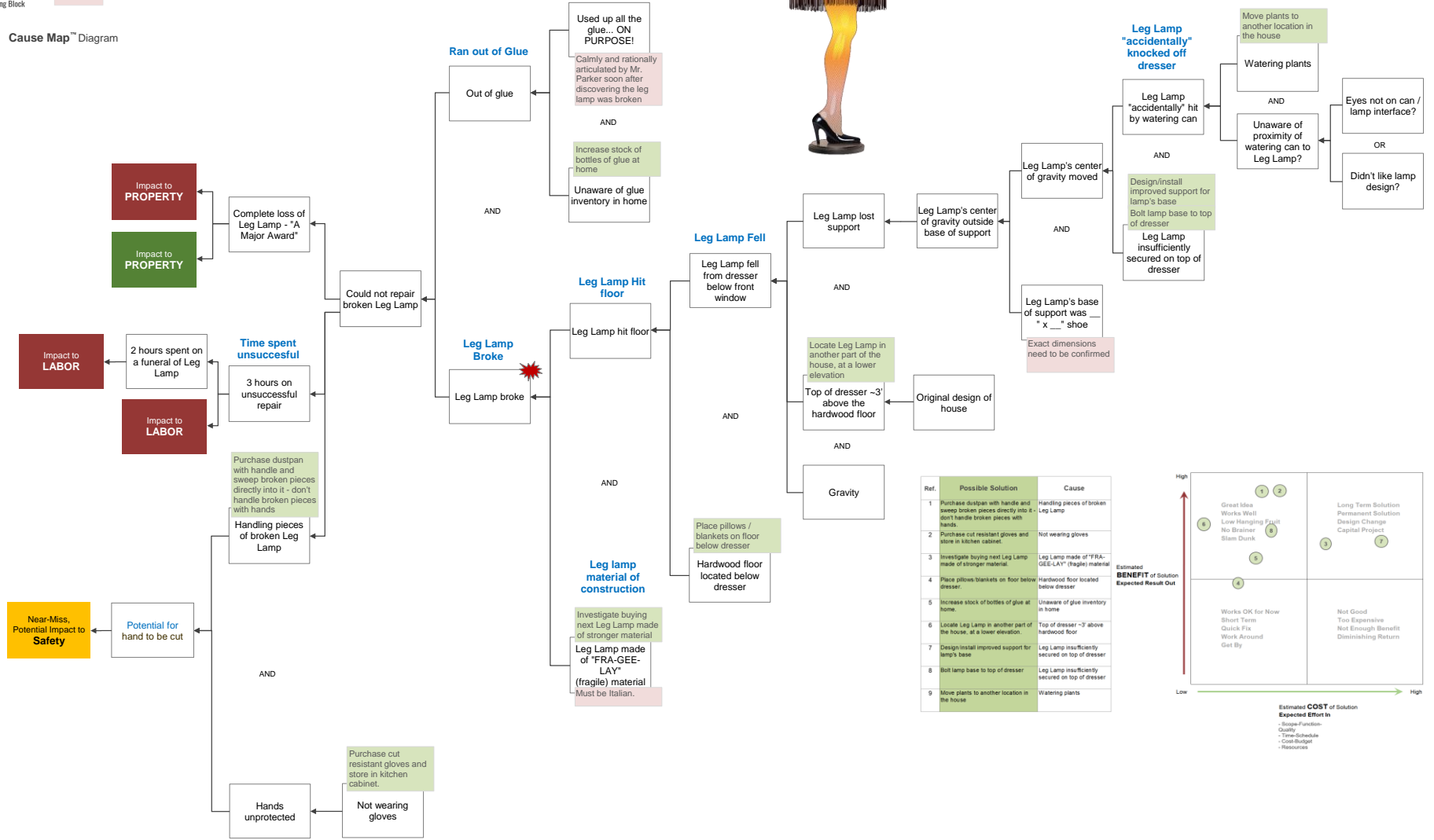
Cause Map™ Diagram



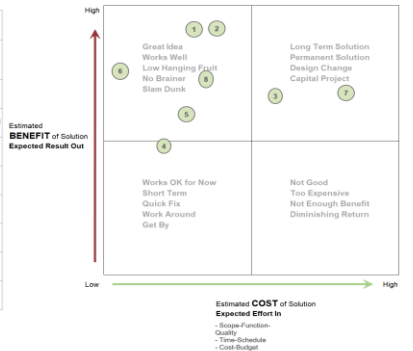
Leg Lamp Broke



Cause Map™ Diagram



Ref.	Possible Solution	Cause
1	Purchase dustpan with handle and sweep broken pieces directly into it - don't handle broken pieces with hands.	Handling pieces of broken Leg Lamp
2	Purchase cut resistant gloves and wear in kitchen cabinet.	Not wearing gloves
3	Investigate buying next Leg Lamp made of stronger material.	Leg Lamp made of "FRA-GEE-LAY" (fragile) material
4	Place pillows/blankets on floor below dresser.	Hardwood floor located below dresser
5	Increase stock of bottles of glue at home.	Unaware of glue inventory in home
6	Locate Leg Lamp in another part of the house, at a lower elevation.	Top of dresser ~3' above hardwood floor
7	Design/install improved support for lamp's base	Leg Lamp insufficiently secured on top of dresser
8	Bolt lamp base to top of dresser	Leg Lamp insufficiently secured on top of dresser
9	Move plants to another location in the house	Watering plants



Solutions - Action Items, Recommendations

	<i>Recommendation, action, control, idea</i>	<i>Cause to be controlled</i>	<i>Task to be improved</i>		
Ref.	Possible Solution	Cause	Work Process	Owner(s)	Due Date
1	Purchase dustpan with handle and sweep broken pieces directly into it - don't handle broken pieces with hands.	Handling pieces of broken Leg Lamp	Housekeeping		
2	Purchase cut resistant gloves and store in kitchen cabinet.	Not wearing gloves			
3	Investigate buying next Leg Lamp made of stronger material.	Leg Lamp made of "FRAGEE-LAY" (fragile) material			
4	Place pillows/blankets on floor below dresser.	Hardwood floor located below dresser			
5	Increase stock of bottles of glue at home.	Unaware of glue inventory in home			
6	Locate Leg Lamp in another part of the house, at a lower elevation.	Top of dresser ~3' above hardwood floor			
7	Design/install improved support for lamp's base	Leg Lamp insufficiently secured on top of dresser			
8	Bolt lamp base to top of dresser	Leg Lamp insufficiently secured on top of dresser			
9	Move plants to another location in the house	Watering plants			

Solutions Matrix

Evaluate the Different Possible Solutions

Ref.	Possible Solution	Cause
1	Purchase dustpan with handle and sweep broken pieces directly into it - don't handle broken pieces with hands.	Handling pieces of broken Leg Lamp
2	Purchase cut resistant gloves and store in kitchen cabinet.	Not wearing gloves
3	Investigate buying next Leg Lamp made of stronger material.	Leg Lamp made of "FRA-GEE-LAY" (fragile) material
4	Place pillows/blankets on floor below dresser.	Hardwood floor located below dresser
5	Increase stock of bottles of glue at home.	Unaware of glue inventory in home
6	Locate Leg Lamp in another part of the house, at a lower elevation.	Top of dresser ~3' above hardwood floor
7	Design/install improved support for lamp's base	Leg Lamp insufficiently secured on top of dresser
8	Bolt lamp base to top of dresser	Leg Lamp insufficiently secured on top of dresser
9	Move plants to another location in the house	Watering plants

